

ONE·TOUCH™

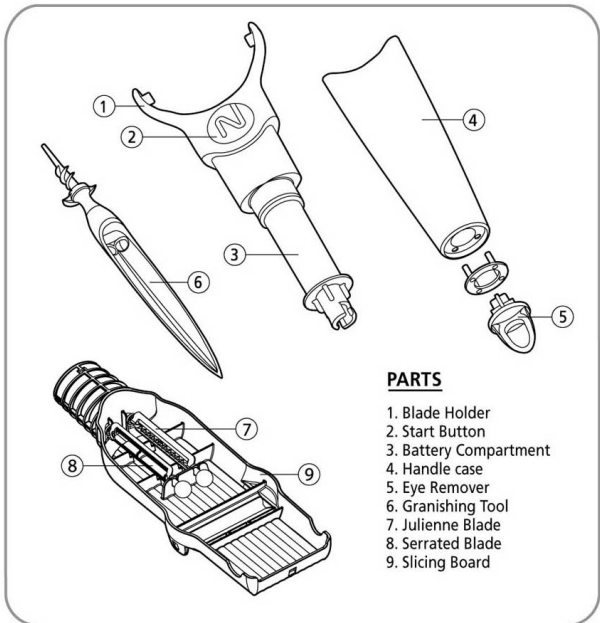
www.ONETOUCHPRODUCTS.com

# POWERBLADE PEELER



USER MANUAL

Model no.: KC58



### **PARTS**

1. Blade Holder
2. Start Button
3. Battery Compartment
4. Handle case
5. Eye Remover
6. Grating Tool
7. Julienne Blade
8. Serrated Blade
9. Slicing Board

## **PEELING**

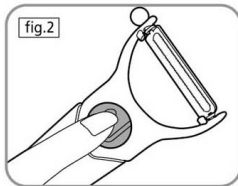
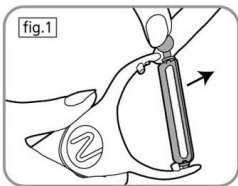
### **CHANGING THE BLADE**

**Note:** Handle blades with caution.

1. Hold the round cap and pull from the slot of the Blade Holder to remove the blade (fig.1).
2. Place the desired blade into the 2 slots of the Blade Holder and lock into place.

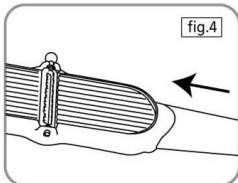
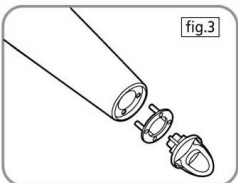
### **USING THE PEELER**

1. Press the Start Button to start the peeler and press it again to stop (fig.2).
2. Simply glide the blade over the food to peel.
3. The peeler can be used with power switched off.
4. Use the Potato Eye Remover when needed.
5. The peeler blades can be cleaned under running water.



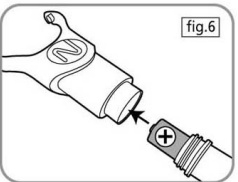
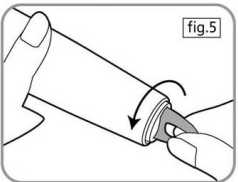
## SLICING

1. Remove Eye Remover and take out the Peeler's handle case (fig.3).
2. Insert Slicing Board into the handle case (fig.4).
3. Place the blade onto Slicing Board.
4. Slice fruit and vegetables.
5. Swap serrated blade for julienne blade, or vice versa.



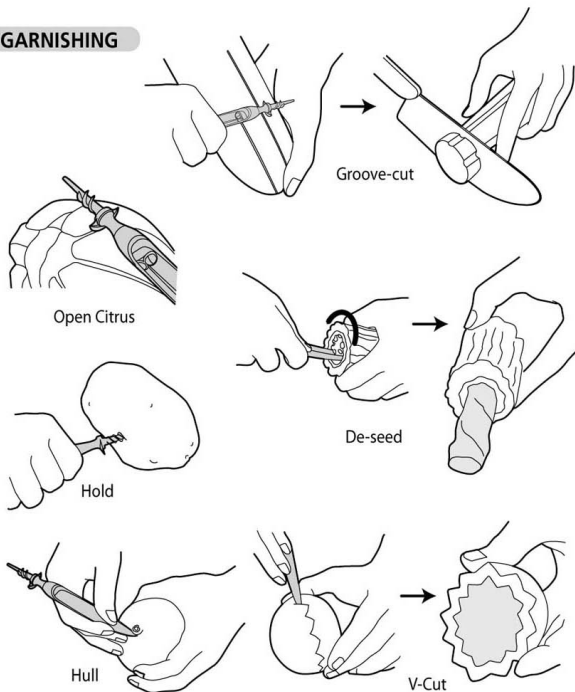
## BATTERY INSTALLATION

1. Turn the Potato Eye Remover counter clockwise and pull out (fig.5).
2. Hold the Blade Holder and pull the Outer Handle down to remove from the Blade Holder (fig.6).



3. Turn the Battery Compartment counter clockwise to open.
4. Install 1 AA alkaline battery or rechargeable battery into the Battery Compartment according to the polarity (+/-) instruction. Close the Battery Compartment by turning it clockwise, making sure that the arrows are aligned.
5. Replace the Outer Handle on the Blade Holder.
6. Re-attach the Potato Eye Remover and click it clockwise to lock into place.

## GARNISHING



### Disposal

The packaging material can be recycled. Please dispose of it in an Environmentally friendly manner and take it to a recycling centre.



If you wish to dispose of this equipment at any point, please do so in an environmentally friendly manner. It should not be disposed of alongside general household waste. Instead, please take it to recycling point for electrical goods. Your local authority will be able to advise you further.

Batteries should not be thrown away in household waste. Please ensure that you always dispose of batteries and rechargeable batteries only when they are empty. Your local authority will be able to advise you further.